

The EYES Have It ...

Let Eyewear Pull Your New Fall Look Together

HITCHCOCK HEROINES

Hitchcock heroines of the early '60s inspire this season's ladylike silhouettes, which include slim over-the-knee skirts, sweater sets, dresses and knit suits. Sophistication is embraced in tweeds, cashmeres and luxurious fabrics with pops of color. Taking a cue from the hit show "Mad Men," classic trench coats and prim accessories like gloves, fur wraps and brooches accentuate beauty and brains.

Eyewear Essentials: Oversized but understated, chic and feminine eyeglasses and sunglasses pull this look together. Try butterfly and cat-eye shapes in rich and pretty colors or timeless and always classy tortoise frames, a must-have in any working gal's wardrobe.

...

MODERN ENGLISH

Eclecticism rules as uptown prep school meets downtown hipster with some gypsy inspiration mixed in. Think "Gossip Girl's" Blair Waldorf meets Serena van der Woodsen to get a style that is quirkily chic. Mix and layer pleated skirts, ruffles, bow blouses, opaque tights, neck scarves and double-breasted jackets with punches of houndstooth, color prints and plaids for a look that really rocks.

Eyewear Essentials: There is a freedom to mix and match lenses and frames for a look that is uniquely you. Play with different logo treatments and gradient and color-tinted lenses to match your mood. Depending on your outfit, col-

ors can be eye-popping bright, neutral or black and white.

...

DARK ROMANCE

An exploration into the drama of forbidden romance

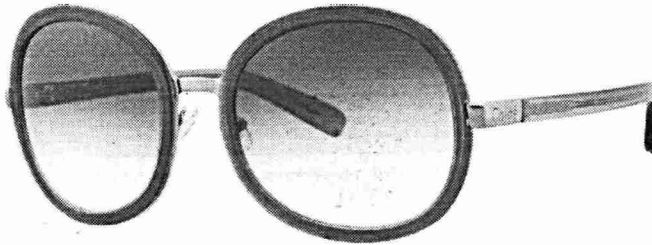
Eyes/Page S-17 reveals gothic femininity and subdued eroticism. Intricate lace and velvet combine with hints of old-world Russian opulence marked with paisley, prints and fur accents; while drapes, folds, ribbons and ruffled effects evoke both calm and tumultuous emotions. Blacks and grays are accompanied by midnight blues, wines,

blood red and muted purples.

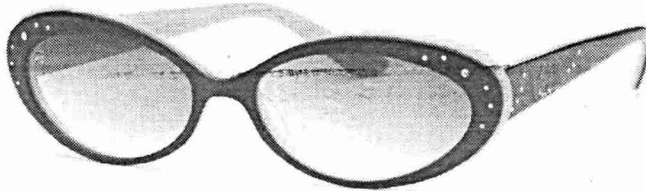
Eyewear Essentials:

Enhance the drama of this look with frames that evoke a sense of mystery. Dark, matte-finished metal eyeglasses and oversized sunglasses will intrigue, while deep colors, subtle jewels and detailed temples will create a rich and sensuous vibe. Shapes can range from delicate to dramatic, as it is the details that make the difference.

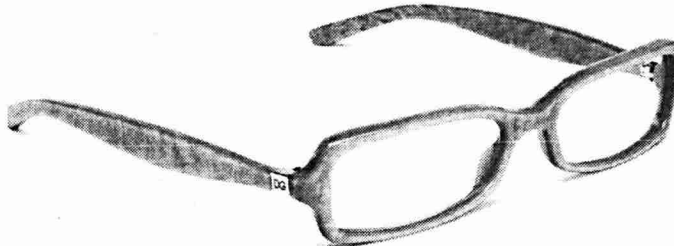
(Vision Council of America)



Chloe by Amy

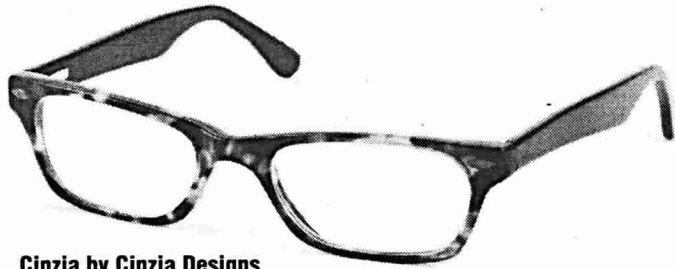


Lulu Guinness by Tura LP



Dulce & Gabbana by Luxotica Group





Cinzia by Cinzia Designs

